



Co-funded by  
the European Union

## Project “CoTIC II: Collaborative Teaching in the Inclusive Classroom”

Project reference number: 2024-1-CZ01-KA220-SCH-000254339

### WORKSHEET

### ENGLISH

Name: \_\_\_\_\_

**Topic: COMPARATIVES AND SUPERLATIVES**

**Grade: 5<sup>th</sup> grade**

**Date:**

**The aim of the worksheet: To check and practise the correct use of the adjectives in the comparative and superlative forms**

**Keywords and their meaning:**

- Comparative and superlative forms
- Short adjectives (e.g.: *big – bigger than – the biggest*)
- Long adjectives (e.g.: *beautiful – more beautiful than – the most beautiful*)
- Irregular adjectives ( *good – better than – the best* and *bad – worse than – the worst*)



## TASK 1

Match the adjective to their comparative forms:

- |                 |                          |
|-----------------|--------------------------|
| 1. BIG          | a) MORE EXPENSIVE THAN   |
| 2. BEAUTIFUL    | b) EASIER THAN           |
| 3. GOOD         | c) WORSE THAN            |
| 4. SHORT        | d) MORE INTERESTING THAN |
| 5. HAPPY        | e) BIGGER THAN           |
| 6. EXPENSIVE    | f) BETTER THAN           |
| 7. BAD          | g) FASTER THAN           |
| 8. EASY         | h) HAPPIER THAN          |
| 9. FAST         | i) SHORTER THAN          |
| 10. INTERESTING | j) MORE BEAUTIFUL THAN   |



## TASK 2

Match the adjectives to their superlative forms:

- |              |                       |
|--------------|-----------------------|
| 1. SMALL     | a) THE TALLEST        |
| 2. LONG      | b) THE MOST EXCITING  |
| 3. DANGEROUS | c) THE BEST           |
| 4. BAD       | d) THE SMALLEST       |
| 5. TALL      | e) THE MOST DANGEROUS |
| 6. SLOW      | f) THE PRETTIEST      |
| 7. EXCITING  | g) THE WORST          |
| 8. GOOD      | h) THE MOST UNUSUAL   |
| 9. PRETTY    | i) THE LONGEST        |
| 10. UNUSUAL  | j) THE SLOWEST        |

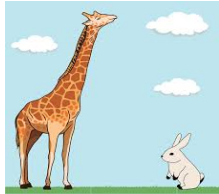
### TASK 3

Make comparative sentences for each picture using the given adjective:



Example:

SLOW: A tortoise is slower than a dog.

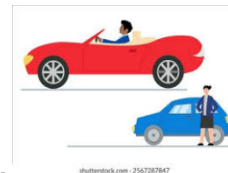


1. TALL:

.....



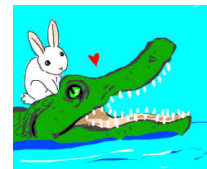
2. SMALL:



3. EXPENSIVE: .....



4. FAST:



5. DANGEROUS: .....



## TASK 4

Put the words in the correct order to make sentences :

1. class / is / the / Tom / tallest / our / in

.....

.

2. than / dolphins / frogs / are / intelligent / more

.....

3. longest / have / giraffes / necks / got / the

.....

..

4. chocolate / than / is / biscuits / better

.....

.....

5. flower / is / this / the / most / beautiful



.....

....

## TASK 5

Look at the fact file about London and Cambridge, then read the text and use the information from the table to put the adjectives in brackets into the correct comparative or superlative form:

Fact file:

TOWN	LONDON	CAMBRIDGE
		
SIZE	very big	small
POPULATION	9 million	150000
VIBE	busy and loud	quiet and old
PARKS	many and large	many and beautiful
PRICE	very expensive	expensive

London and Cambridge are both towns in England. London is the capital city. It is 1) ..... ( big ) than Cambridge. Millions of people live in London, so it is 2) .....( busy ) city. There are many shops and tall buildings.

Cambridge is a nice city. It's 3) ..... ( small ) and 4) ..... ( quiet ) than London. Many students live there because of the university. Cambridge is very old. Some people say it is 5) ..... ( beautiful ) city in England.

London is very expensive, but Cambridge is also not cheap. London is 6) ..... ( expensive ) city for a hotel. Both cities have many green parks. In London, the parks are 7) .....

( large ), but in Cambridge, the parks are 8) ..... ( pretty ).

## Key to the answers

### TASK 1

1 e, 2 j, 3 f, 4 i, 5 h, 6 a, 7 c, 8 b, 9 g, 10 d

### TASK 2

1 d, 2 l, 3 e, 4g, 5 a, 6 j, 7 b, 8 c, 9 f, 10 h

### TASK 3

1. The giraffe is taller than the rabbit.
2. The mouse is smaller than the elephant.
3. The red car is more expensive than the blue car.
4. The plane is faster than the bus.
5. The crocodile is more dangerous than the rabbit.

### TASK 4

1. Tom is the tallest in our class.
2. Dolphins are more intelligent than frogs.
3. Giraffes have got the longest necks.
4. Chocolate is better than biscuits.
5. This is the most beautiful flower.

### TASK 5



Co-funded by  
the European Union

London and Cambridge are both in England. London is the capital city. It is **bigger** than Cambridge. Millions of people live in London, so it is **the busiest** city. There are many shops and tall buildings.

Cambridge is a beautiful city. It is **smaller** and **quieter** than London. Many students live there because of the university. Cambridge is very old. Some people say it is **the most beautiful** city in England.

London is very expensive, but Cambridge is also not cheap. London is **the most expensive** city for a hotel. Both cities have many green parks. In London, the parks are **larger**, but in Cambridge, the parks are **prettier**.